



Telemetry Solutions

StatPak-PC™

Desktop Edition



Telemetry
Solutions
Company

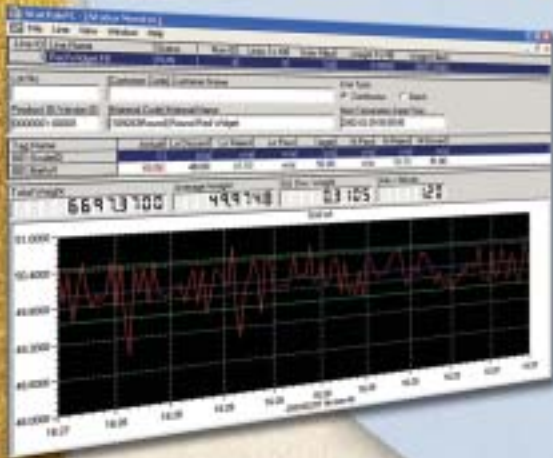


Telemetry Solutions'

StatPak-PC™ Desktop Edition



Material, Recipe Entry



Status View

Month	Total Units	Units Filter	Weight Filter
01/December	0	0	0.0000
02/November	0	0	0.0000
03/October	0	0	0.0000
04/September	0	0	0.0000
05/August	0	0	0.0000
06/July	0	0	0.0000
07/June	0	0	0.0000
08/May	0	0	0.0000
09/April	0	0	0.0000
10/March	0	0	0.0000
11/February	1400	1000-5000	0.0000
12/January	0	0	0.0000

Report on single or multiple production runs

Designed Specifically for Production Filling & Weighing Equipment

Statpak-PC™ is the first-of-its-kind all-inclusive data collection, viewing, and reporting program specifically designed for production filling and weighing applications like yours. Included in the program are three powerful products; full-featured database for storage and classification of weight data, status view providing real-time monitoring of all scale devices, and detailed summary and analysis reports to print, view, and email.

Statpak-PC™ has been specifically designed to be extremely easy to install, configure, and use, yet provides remarkably powerful data collection and analysis tools within. Users from novice line operators to experienced Quality Assurance, Production Supervision and Corporate Management will find Statpak-PC™ to be one of the most valuable tools they will ever use. Programmable features also allow IT professionals to create and use customized reports, or tailor Statpak-PC™'s interface to meet their company's specific needs. Exporting features and the ability to view production from multiple computers on a network expand Statpak-PC™'s capabilities to fit your application.

STATUS VIEW SCREEN PROVIDES:

- Production line name
- Material name
- Lot Number
- Total Units
- Total Weight
- Units Per Minute
- Standard Deviation
- Mean Unit Weight
- Bar chart with upper and lower spec and discard limits
- Scroll feature to browse all active production lines and select any one to view
- Classifies weights into 5 zones - low & high reject (spec limit), low & high pass, Target zone
- Adjustable low & high discard limits to help qualify production data

Your Total Solution To...

- weight data collection
- supervisory viewing and control
- production data analysis
- detailed reporting in many formats

Stat-Pak-PC™ includes everything you need: database, recipe & Material data entry, charting and powerful analysis & reporting.

Other Features include:

- Runs on Windows 95/98/2000/NT
- Connects thru computer's COM port or your network
- Easy protocol and parsing feature allows you to select and configure data from each scale
- Supports COM/DCOM and DDE
- Remote control over Material selection and start/stop production runs with Telemetry Solutionis Model 9102, or direct interface available with select filler and checkweigher controllers.
- Connect to in-motion or static checkweigh scales, discrete fillers; Net weigh, gross packers, FFS, etc., and Bulk fillers; Bulk Bag, Drum, Tote, etc.
- Connects to any scale that transmits either final weight or Gross/Net/Tare
- Connects up to 64 different production scales
- Collects up to 400 unit weights per minute
- Model an infinite number of production lines and scale devices
- Create an infinite number of finished Materials
- Create an infinite number of Recipes
- Management tools for maintaining and compressing information within the database
- Export to or use SQL Server®, Oracle®, or other database programs
- Run production lines in either Batch or Continuous Mode
- Set specific times (hour, shift, day, etc.) for opening and closing production runs
- Specify and associate customers with specific finished products
- Create and associate operators by name and ID number with production runs
- Change production runs on any connected line
- Shows time/date for current run termination in Continuous mode



Optional Field Data Portal



Optional 8 Port Multiplexer

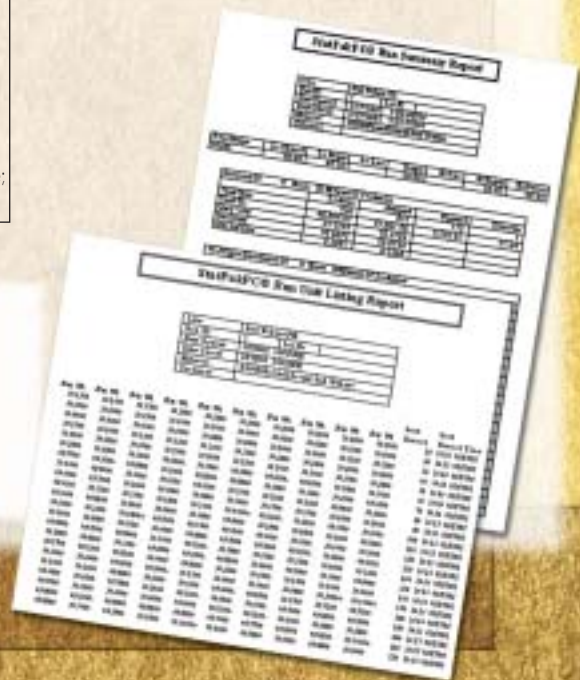
Remote View Option:

- Share data with Quality Assurance, Management, Marketing, Shipping Departments, etc.
- Allows other computers on your network to view and report on production data from the host computer
- Up to three remote views can be installed, dependent upon production speeds and your network performance

Down-Time Logging Option:

- Track each occurrence of down-time for each connected production line
- Log assignable down-time, such as shift change, schedule breaks, etc.
- Log non-assignable down-time, such as breakdowns, no product, line stoppages, etc.
- Print detailed reports listing each down-time occurrence along with production efficiencies
- Create reports that span selectable periods of time; shift, day, week, etc.

Use one of Statpak-PC™'s 4 standard reports, or create your own customized reports with Crystal Reports® and import into Statpak-PC™.





Telemetry Solutions
StatPak-PC™
Desktop Edition

Telemetry
Solutions
Company 

2758 Bingle Rd.
Houston, Texas 77055
Phone: 713-932-9071
Fax: 713-932-9379